

CHARLESTON



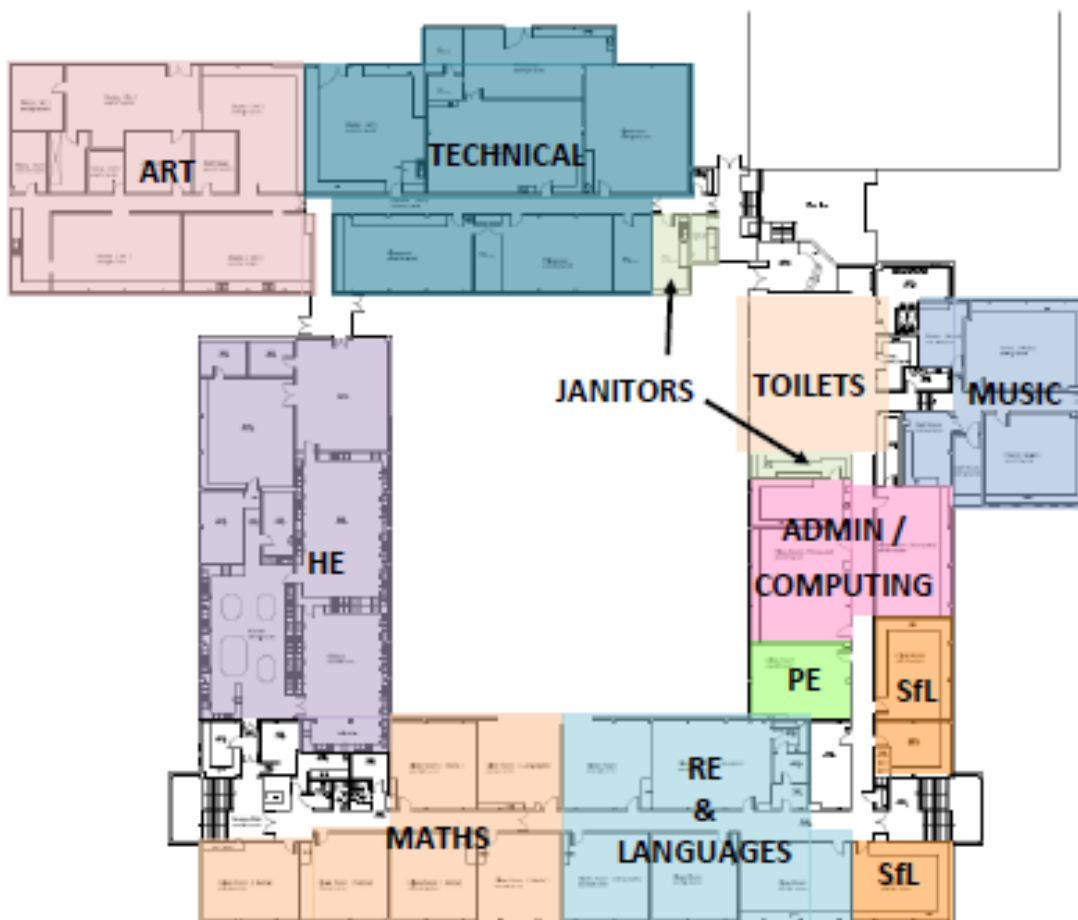
ACADEMY

P7 Open Night. Questions from parents:

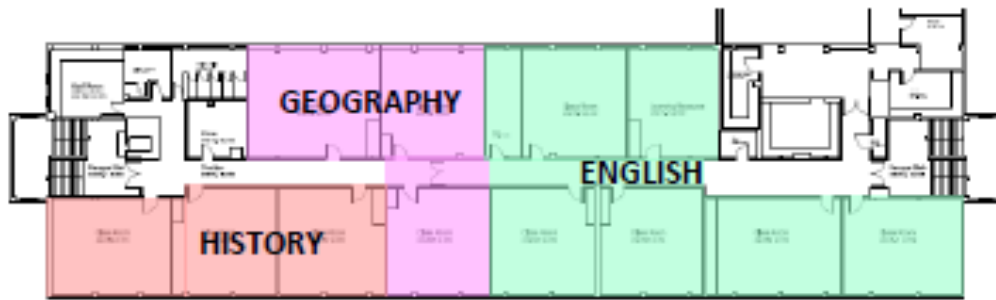
Q. Will the students get a map of the school?

A. Yes - they will. Below is the map of the school.

SCHOOL LAYOUT



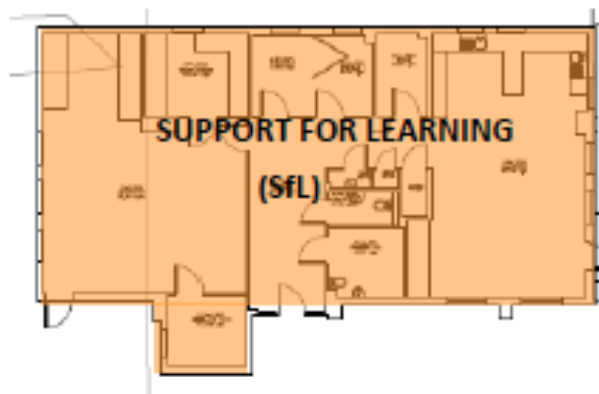
Plan 1: ground floor & A floor



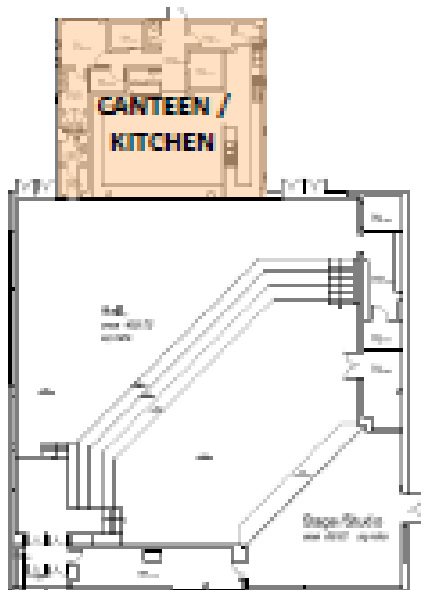
Plan 2: main block B floor



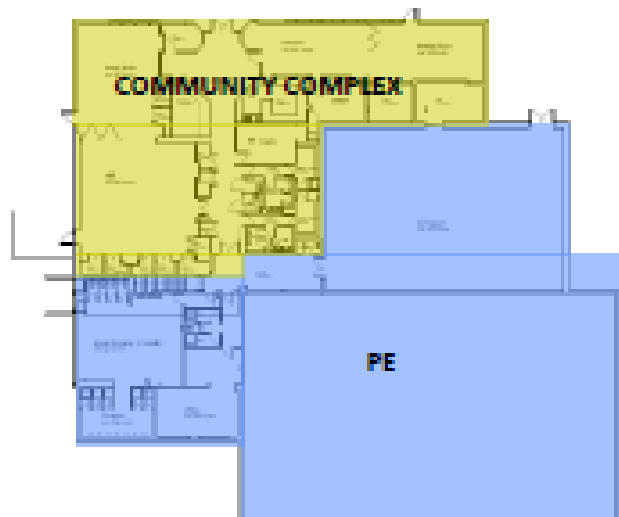
Plan 3: main block C floor



Plan 4: the Arches (under HE)



Plan 5: office, SMT, Guidance, library, assembly hall & canteen (same level as B floor)



Plan 6: Community complex and PE block

The school is scheduled from April 2020 to have a £7.5million investment in a new extension building to include Science. Refurbishment work will also be part of that money. A consultation around that is ongoing.

Q. Are other languages available other than French and Gaelic?

At the moment French and Gaelic are our main languages and these are covered across our local Primaries. However, as the school roll rises we are keen to extend our language provision. We recently held a parent consultation on our curriculum and they were keen that we look at the provision of Spanish in the future.

Q. Is there a list of extra-curricular activities?

A. We have a massive number of extra-curricular activities on offer. All clubs are advertised via our website Daily Notices. These notices are read every day to pupils at registration. Parents can access them daily via the website:

<https://www.charlestonacademy.co.uk/news/>

The clubs run on a voluntary basis with staff leaders. Just as a simple indicator we have (by no means covering every club): Science Club, Debating, Northern Lights (Acting, singing dancing, stage production, lighting etc.), Singing, various Cooking related activities, Diversity, Basketball, Football, Shinty, Badminton amongst many others.

Q. What is your anti-bullying policy?

A. Our policies (including anti-bullying) can be found at

<https://www.charlestonacademy.co.uk/information/policies/>